

## SAFE BATTERY USAGE

- Use alkaline batteries for best performance and longer life.
- Use only the type battery recommended for the unit.
- Batteries should be replaced only by an adult.
- Insert batteries with the correct polarity (+ and -).
- Do not mix old and new batteries.
- Do not mix alkaline, standard (carbon-zinc), or rechargeable batteries.
- Do not short-circuit batteries.
- When not used for an extended time, remove batteries to prevent possible leakage and damage to the unit.
- Do not mix rechargeable and non-rechargeable batteries.
- Rechargeable batteries are to be removed from the toy before charging.
- Rechargeable batteries are to be recharged only under adult supervision.
- Do not recharge non-rechargeable batteries.
- Exhausted batteries are to be removed from the toy.
- Do not dispose of batteries in fire as they may leak or explode.

## FCC COMPLIANCE

NOTE: This equipment has been tested and found to comply with the limits for a Class B digital device, pursuant to Part 15 of the FCC Rules. These limits are designed to provide reasonable protection against harmful interference in a residential installation. This equipment generates, uses and can radiate radio frequency energy and, if not installed and used in accordance with the instructions, may cause harmful interference to radio communications. However, there is no guarantee that interference will not occur in a particular installation. If this equipment does cause harmful interference to radio or television reception, which can be determined by turning the equipment off and on, the user is encouraged to try to correct the interference by one or more of the following measures:

- Reorient or relocate the receiving antenna.
- Increase the separation between the equipment and receiver.
- Connect the equipment into an outlet on a circuit different from that to which the receiver is connected.
- Consult the dealer or an experienced radio/TV technician for help.

This device complies with Part 15 of the FCC Rules. Operation is subject to the following two conditions: (1) This device may not cause harmful interference, and (2) this device must accept any interference received, including interference that may cause undesired operation.

Caution: Modifications not authorized by the manufacturer may void users authority to operate this device.  
CAN ICES-3 (B)/NMB-3(B).



'Let's care for the environment!'

The wheelie bin symbol indicates that the product must not be disposed of with other household waste. Please use designated collection points or recycling facilities when disposing of the item. Do not treat old batteries as household waste. Take them to a designated recycling facility.

Please keep this manual as it contains important information.

**MGA**  
ENTERTAINMENT®

**Zapf**  
Creation®

© Zapf Creation AG  
Baby born® is an internationally registered trademark of Zapf Creation AG.  
Manufactured and distributed under license by MGA Entertainment, Inc.  
16300 Roscoe Blvd.  
Van Nuys, CA 91406 U.S.A.  
(800) 222-4685  
Printed in China

MGA Entertainment UK Ltd.  
50 Presley Way  
Crownhill  
Milton Keynes, MK8 0ES  
Bucks, UK  
+ 0800 521 558

Visit [www.mgae.com](http://www.mgae.com)  
to register your product  
and to enter our sweepstakes  
(No purchase necessary)

The preferred method of contact for Customer Service is through our e-mail contact form at [www.mgae.com](http://www.mgae.com)



## Musical Foaming Bathtub

916052

Ages 3+  
ADULT SUPERVISION REQUIRED

### CONTENTS

- A. 1 Bath Tub
- B. 1 Shower and Foam Station
- C. 1 Rubber Ducky

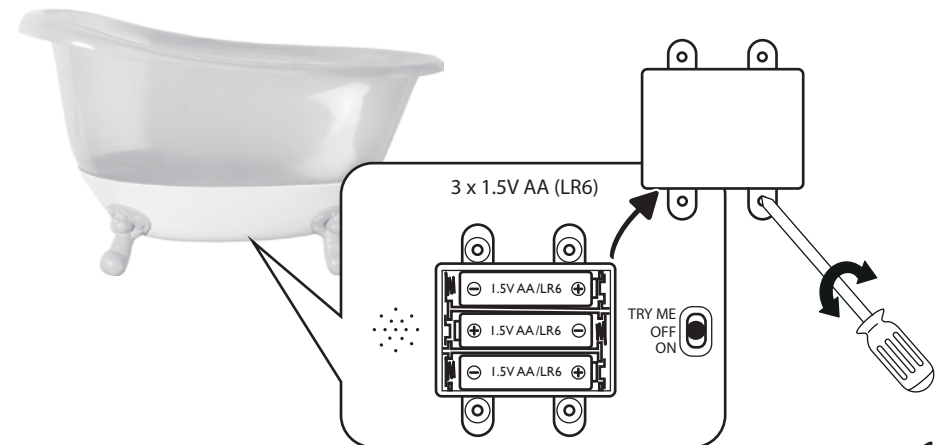


Illustrations are for reference only. Styles may vary from actual contents.

### BEFORE YOU BEGIN

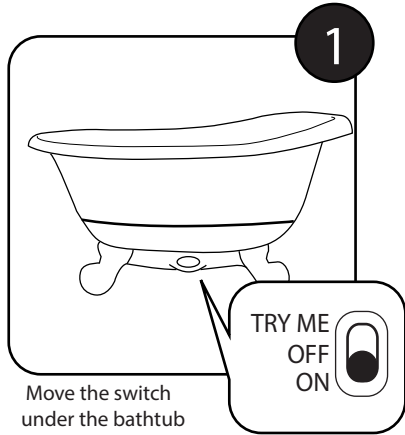
The batteries included in your bath are for in-store demonstration. Before beginning, an adult must install fresh alkaline batteries. Here's how:

1. Turn the bathtub OFF.
2. Using a Phillips screwdriver (not included), remove the screw and battery compartment cover located under the bath tub.
3. Install three (3) fresh 1.5V AA (LR6) alkaline batteries (not included) making sure the (+) and (-) ends face the proper direction as indicated inside the battery compartment.
4. Replace the compartment cover and tighten the screw.



## QUICK START

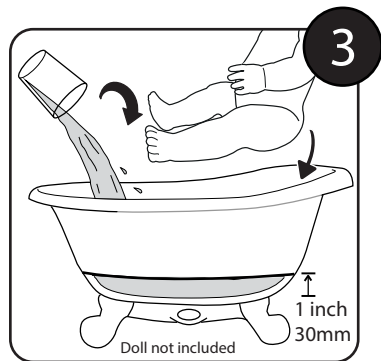
NOTE: Before beginning, cover the play area to prevent possible water damage.



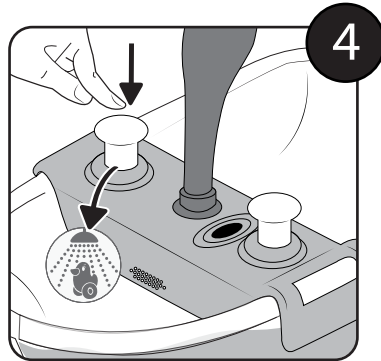
Move the switch under the bathtub to the "ON" position.



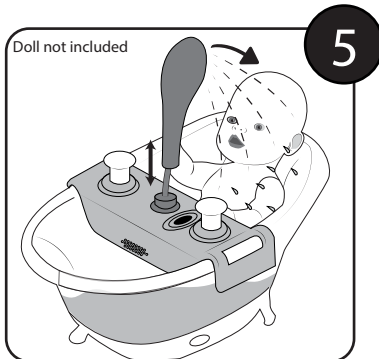
Push the button on the side of the bathtub to hear fun sounds and see blinking lights in different colors!



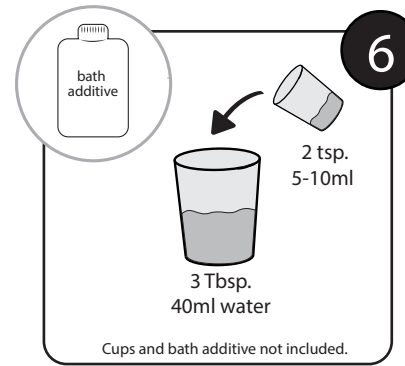
Fill the bathtub with water up to the fill line indicated on the tub (about 1 inch or 30 mm).  
Doll not included



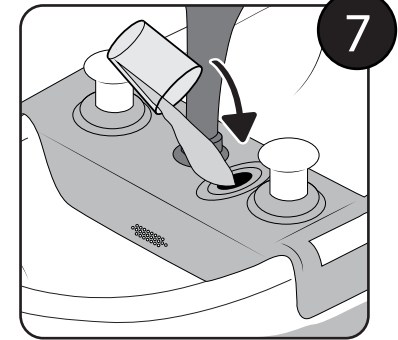
To use the shower head, repeatedly press the pump button on the shower and foam station.



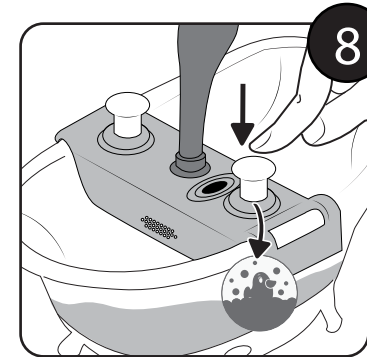
The shower head is adjustable.  
NOTE: The hose has a limited length.  
Do not pull or tear off!



Prepare the foam bath:  
Mix 3 tablespoons (40 ml) of water and 2 teaspoons (10 ml) of bath additive in a cup or bowl.



Pour the mixture in the opening on the shower and foam station.



Pump the foam button repeatedly. Foam will flow from the station into the bath tub.

For more foam fun, refill the container with bath water or create a new mixture of the water and bath additive at the ratio above.

## IMPORTANT INFORMATION

- ⚠ WARNING:** Constant, competent adult supervision is REQUIRED when children are playing around water.
- DO NOT allow children to play in water that is near an electrical source or apparatus.
  - DO NOT leave the product near an electrical source or apparatus when wet.
  - NEVER use any of the included accessories with a real baby!
  - This item is not suitable for children under the age of three.
  - Please wipe the product out carefully with a dry cloth after use.
  - After playing with foam, please rinse the entire unit with clear water and pump clear water through the foam pumping button.
  - Dry the product thoroughly before opening the battery compartment.
  - Only use the included accessories.
  - Item set up and clean up must be performed by an adult.
  - This item is not suitable for children under the age of 3.
  - Only fill the product with clear water or with water that contains commercially available bath additives.
  - Do not aim the jet of water at people, other living things or electrical devices.